

# TOOLKIT GUIDE



The toolkit is designed to help you generate solutions for an informal care system based on Internet of Things technologies.

It consist of four parts:

- 1 **CARD SET**
- 1 **IDEATION CANVAS**
- 2 **JOURNEY MAPs**
- Several **BUTTONs**

1

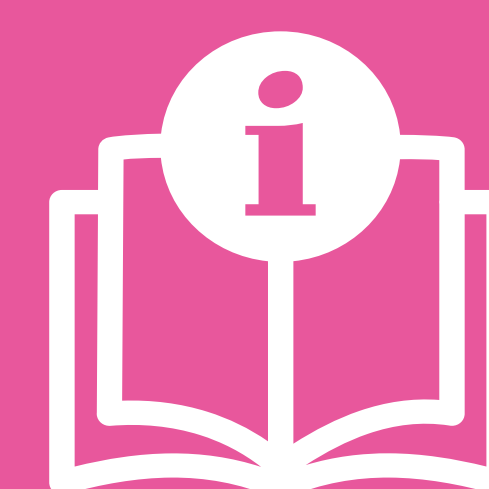
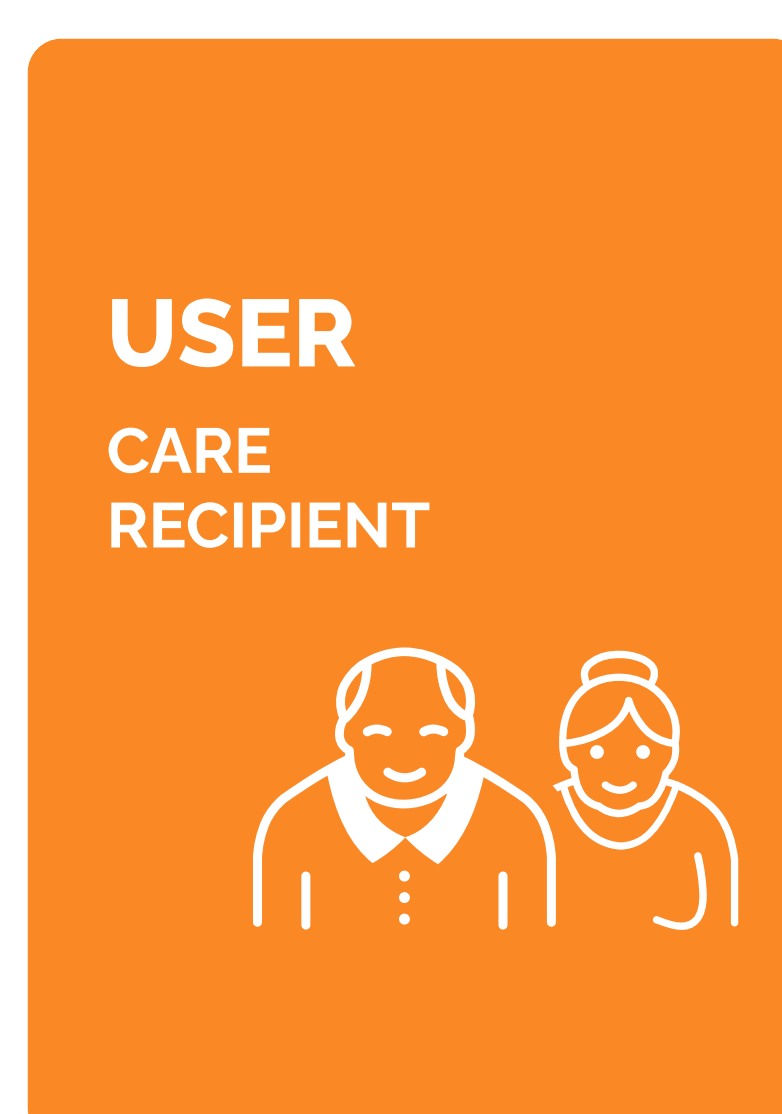
**Informal care** can be generally defined as the long-term unpaid care provided to the elderly and those with chronic health conditions in a non-professional capacity.

**Internet of Things** equips everyday objects with sensing, networking, and processing capabilities to enable them to interact with each other and services on the Internet.

There are four catergories of cards in the **CARD SET**.

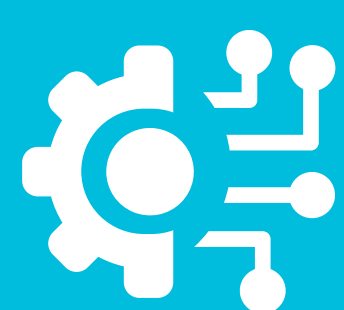
- **USER**  
CAREGIVER  
CARE RECIPIENT
- **SCENARIO**
- **CONTEXT**
- **TECHNICAL OPPORTUNITY**

The informal care recipients are those who receive long-term care from non-professional caregivers.



Technical opportunities can help you discover the possible solutions using IoT and related technologies.

TECHNICAL  
OPPORTUNITY



- An **IDEATION CANVAS** is provided for you to use the cards, but you can use them in your own way.
- **JOURNEY MAPs** can help you build up the connections to the physical world. It can be used separately with Technical Opportunity cards and Buttons.
- **BUTTONs** are used to represent humans in the *Journey Maps*.

- Play with the cards! Shuffle and draw cards when needed
- Re-draw a card if you do not like it
- Feel free to modify the provided cards and add your own cards using the blank cards

The informal caregivers are usually people who have a social relationship with the care recipients.

USER  
CAREGIVER



Scenarios can be used to describe both what currently happens within a system or environment or more typically the intended behavior within a system or environment.

SCENARIO



Context is used to refer to the circumstances, background, or environment in which a person, thing, or idea exists or occurs.

CONTEXT

